

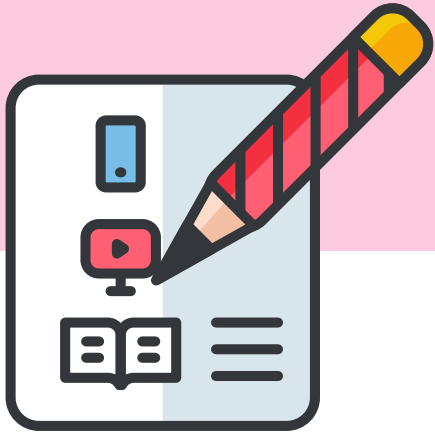


**is ready to Welcome you
in September**

Happier Together

August 18, 2020

Table of Contents



01 Welcome

06 Before Re-opening

37 Tuition fees

44 Appendix II

51 Helpline

04 Quality Assurance

15 Operational procedures

38 Appendix I

48 Appendix III

56 Emergency Contact No

PART A

Before Reopening



#Newdays&Newways

Happier Together - Guidelines for
Re-opening of the Amity School Dubai on
August 30, 2020 in accordance with the
protocols for re-opening of private schools in
Dubai mandated by the KHDA



Welcome

The Amity School Dubai is happy to welcome all our students and staff back to school to continue session 2020-2021 on August 30. From August 18 onwards the Parents Relations Executive Ms. Deeksha Fernandez, the School Counsellor Ms. Sushma D'Mello and the Class Teachers will communicate regularly with you to prepare your child for a unique back-to-school experience. Students who have opted for face to face in-campus learning will be placed in **class bubbles** and those who have opted for the distance learning program will be placed in **class sections**. Reduced number of students in bubbles enable us to maintain the distance of 1.5 m between students and ensure there is adequate space for teachers to move freely around the classroom to support individual students.

Class size – bubble and sections at the Amity School Dubai for On-Campus and Distance Learning provision are on page 2

Maximum number of students as per Instructional Format

PRE - K

- Maximum bubble strength - 10
- Maximum section strength - 15

K1 - K2

- Maximum bubble strength - 10
- Maximum section strength - 25

Grade 1 - 2

- Maximum bubble strength - 18
- Maximum section strength - 25

Grade 3 - 7

- Maximum bubble strength - 15
- Maximum section strength - 25

At all times we are trying to achieve the following:

- **limit the contact between the groups of students**
- **limit the contact between staff members and students**
- **plan for the movement of groups around school in order to minimize contact between groups including OT parents**

Please note the distance learning is a temporary option as communicated by the KHDA. It is our endeavor to bring all our students back to school safely.



Promoting behaviors that reduce spread (physical distancing, washing hands and wearing masks)

Maintaining healthy operations (staggering schedules, keeping students in small groups)

Maintaining healthy environments (ensuring proper ventilation, cleaning and disinfecting frequently touched surfaces)

Quality Assurance

The ASD assurance on quality education -

The ASD action plan will Reduce Risk of Transmission for on-campus learning. We have implemented unique strategies across 4 key areas to reduce the spread of COVID-19.

Preparing for when someone gets sick



- We have an extraordinary action plan to support the emotional wellbeing of students both in person and virtually
- We will provide options for real-time interaction between students and teachers (Microsoft Teams) and will ensure compatible digital modes of learning to match the students learning style and needs
- ASD will improve the quality of education, by ensuring sufficient engagement during prolonged periods of distance learning and will provide ample opportunities for students to stay socially connected as well



Before Reopening



Develop important policies and standing operational procedures based on Government protocols, revise existing policies and contracts and create a new investment plan

The school team is completing the following procedures

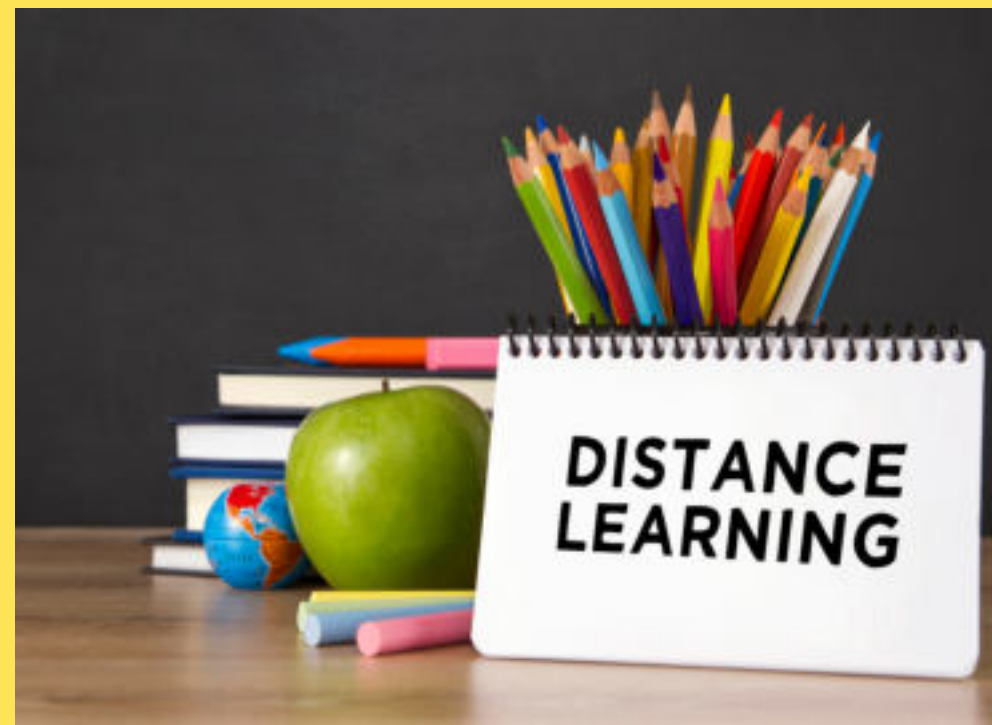


Provide parents with the details of the Reopening Model via small group Live Webinars from PK to VII.



The ASD instructional reopening model is a Blended Learning Service Provision for 5 days of the week. There are 3 options based on different scenarios.

3 Options



1

2

3

Summary of 3 Options

1

Blended Learning Reopening Model with two groups of students.

GROUP A – in a day, students have Blended Learning sessions with 4 live face to face Learning Activities on campus and two synchronous sessions online through TEAMS. This is done to reduce contact time and avoid mixing of the bus bubbles. Please refer to Appendix I, Table I.

GROUP B – students opt for a temporary Distance Learning program with 6 synchronous Learning Activities on each day. Please refer to Appendix I, Table II.

2

If the school / grade / bubble / section close for any critical reason then the respective students / teachers will continue distance learning similar to Group B

Should all students choose to come back to school after a given time

then the schools' capacity of 24000 sq. m will allow a full return model of 700 students to provide safe physical distancing between students and staff. All health and safety guidelines provided by regulatory authorities will be followed.

3

The school will provide distance learning completely for students who cannot be physically present on campus. This includes:

- Students who are home for isolation
- Students of Determination (on request)
- Students whose safety needs cannot be met in accordance with the risk assessment conducted





Provision for student of Determination

- Risk assessment has been formulated for every student of determination and control measures have been determined
- Learning support assistants, where required, will support the students in the class
- Students staying at home will receive regular distance learning modules as other students. In addition to this they will be supported by the support teacher and the school counsellor through one on one sessions through Microsoft Teams

The PRE will follow up with timely communication with parents for points (a) to (g).

Getting ready for school at home



Expectations from Students and Parents



Expectations from Students

- Once they are allowed into the building at the assigned time, they will be required to follow the walkways from the drop off point and will go immediately to their assigned classroom
- Are not permitted to use the lockers and will keep the bags and water bottles with them at all times
- Sanitise hands when entering the building
- Will wear PE uniform to school on PE days and full School uniform the rest of the week
- Sanitise hands upon entering the classroom
- Will adhere to the distancing measurements in place both in the class and during breaks.
- Will follow instructions from staff
- Will leave the school immediately at 12.00 pm

Expectations from Parents

- Will check their child's temperature at home before school
- Will not give children any medication to alleviate symptoms including fever
- Will not send an unwell child to school
- Own Transport Parents will arrive at the designated start time and dismissal time – it is very important to keep to these times to ensure social distancing
- Own Transport Parents will drop off their children in front of gate no. 5. for KG and gate no. 1 for grade I - VII. Only one adult to drop off children per household
- Will pick up a sick/unwell child immediately
- Do not ask teachers to make any special accommodations that impact the teacher's safety
- Will inform the school if a child or member of the household tests positive for COVID-19
- Will leave the school grounds immediately after collecting their child

